



MEETINGS &  
EXECUTIVE RETREATS

LAKE  HOUSE  
DAYLESFORD  
HOTEL. RESTAURANT. SPA



## DAYLESFORD & SURROUNDS

The pretty village of Daylesford is located 80 minutes from Melbourne and an hour from Melbourne airport.

Known since the time of the aborigines as a place of healing, the region boasts the largest number of natural mineral water springs in Australia and the largest concentration of holistic therapists in the southern hemisphere.

A mecca for generations of artists drawn by the region's luscious light, locations and seasonal ambience; Daylesford continues to attract many well known contemporary artists and residents.

The main street environs of the village offer a plethora of quirky shops, great bookshops, cafes, pubs and art galleries.

Food and wine are consuming passions here. There's an undisguised pride amongst local producers, winemakers and restaurateurs. So expect to wine and dine very well in Daylesford and surrounds. With such a wide range of experiences from farm gates, markets, cellar doors, provodores, country pubs, wine bars to world class fine dining - you'll be spoilt for choice.

The village itself is surrounded by several thousand hectares of state forest. Walking tracks through the forest alongside rivers, lakes and waterfalls yield frequent encounters with an abundance of Australian animals including wallabies, wombats and koalas.

For those wanting a little more activity in the fresh air there is horseriding, guided walks, golf, fishing, cricket and more.





## LAKE HOUSE HOTEL – RESTAURANT – SPA

A tranquil retreat on the shores of lake Daylesford. Rooms and Suites are decorated in a fresh contemporary country style – individually appointed with original paintings from Resident Artist Allan Wolf-Tasker's studio.

Six acres of country gardens extend down to the lakeshore and provide guests with immediate access to the Wombat State Forest beyond.

The much awarded restaurant has 2 Chef's Hats from The Age Good Food Guide and the Award for Best Country Wine List. In the kitchens, a talented young team, under the guidance of Owner and

Executive Chef Alla Wolf-Tasker, works from the ground up producing cutting edge, modern Australian cuisine with an emphasis on seasonal and regional ingredients.

The Salus Spa, designed with blond wood and splashes of Tiffany blue, is surrounded by waterfall fed streams and completes the picture of this indulgent and blissful retreat.





## THE TERRACE ROOM

A multi-functional space that can be set up to suit your individual needs. Whilst set to suit a business style setting, it continues the theme of sophisticated country chic that pervades Lake House.

Flexible configurations can be arranged to accommodate more intimate meetings or larger conference needs.

Audio Visual equipment and assistance including lectern & microphone, data projector, TV / VCR / DVD display is provided and of course more complicated set ups and requirements can be arranged with prior notice.

The floor to ceiling high windows provide plenty of natural light and views out to the surrounding gardens and water features.

Extensive foyer areas and additional break out rooms provide plenty of flexibility and broad expanses of outdoor areas are ideal for taking in the sweet country air.





## ROOM CAPACITY

Room	U-Shape	Theatre	Cabaret	Boardroom
The Terrace Room	-	168	150	50
Sutton Room	22	42	50	16
Bagnall Room	22	42	50	16
Tipperary Room	22	42	50	16
Two Room Combination	43	116	100	32
Terrace Bar	-	-	50	-
Outdoor Area	-	-	80	-



## AUDIO & VISUAL PACKAGE

Lake House offers the complimentary use of the following equipment in the main plenary room:

- Whiteboard
- Flip chart
- Screen
- Lectern and microphone

We also offer a range of amenities that you are welcome to hire:

- TV & VCR
- Data projector
- Lapel microphone
- Table microphone
- Electronic whiteboard
- Flip chart
- Star conference phonal
- CD player

Should you require a more involved audio-visual set up, please advise our events team.

## MEETING PACKAGE

### Base Package

Inclusive of – Continuous tea and coffee, morning tea, working lunch, afternoon tea, conference facility, screen, flip chart, whiteboard, overhead projector.

### Standard Package

Inclusive of – Continuous tea and coffee, morning tea, working lunch, afternoon tea, conference facility, screen, flip chart, whiteboard, overhead projector and two course set menu dinner.

### Premium Package

Inclusive of – Continuous tea and coffee, morning tea, working lunch, afternoon tea, conference facility, screen, flip chart, whiteboard, overhead projector and three course dinner.

### Exclusive Package

Inclusive of – Continuous tea and coffee, morning tea, harvest lunch, conference facility, screen, flip chart, whiteboard, overhead projector and a four course degustation dinner.



*Please note: for half day packages you are welcome to choose from either morning OR afternoon tea.*



## PRIVATE DINING

### Lake House Restaurant

The Lake House dining room boasts magnificent views through its expanse of windows. At dusk, the kookaburras fly in to be fed on the outdoor terraces and a log fire provides a warm welcome in Winter. In Summer, tables are set outdoors underneath the 30 year old gum trees and overlooking the water.

The Lake House menu is contemporary Australian cuisine and pays homage to the best available seasonal produce and the efforts of our regional suppliers. A team of talented dedicated young

cooks and chefs under the direction of Executive Chef Alla Wolf-Tasker work from the ground up producing everything from bread, which is baked twice a day, to the jam which you can purchase and take home with you.

### The Cellar

The 10,000 bottles from the award winning Lake House winelist have to be held somewhere special. That space is the unique Cellar Room - located beneath the Lake House restaurant. Perfect for up to 16 people, The Cellar Room is a popular place for private dinners.

### The Lagoon Deck

As close as you can get to the water - the exclusive Lagoon Deck can be reserved for private parties and celebrations. Perfect for small groups - the Lagoon Deck is located off the private cellar and has spectacular waterfront views. What a great location for a break out drinks or an informal feast.

### The Wood Fire Pizza Oven

Gourmet barbecue and pizza from our outside wood fired pizza oven.





## TEAM BUILDING ACTIVITIES

- Corporate Team Building & Development Programs
- Culinary Olympics
- Scavenger Hunts
- Clay Pigeon Shooting
- Treasure Hunt
- Quad Bike Safari through Wombat State Forest
- Daylesford Tours
- Guided Walking & Hiking
- Fly Fishing
- Golf with the Kangaroos
- Wine Tastings
- Winery Tours & Tastings
- Cooking Classes
- Beer Appreciation
- Tarot Reading & Holistic Healing
- Yoga, Tai Chi & Pilates
- Laughter Club



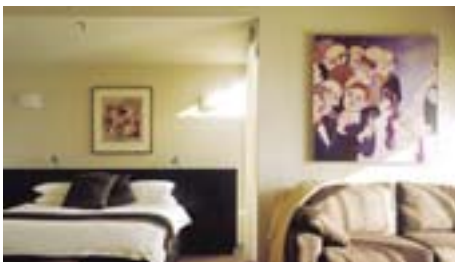


## SALUS SPA

Nestled in the 6 acres of gardens and surrounded by a gully of ferns and a babbling brook, the Salus Spa will pamper and indulge. With 10 different treatment rooms and our experienced beauty therapists you can be sure that you will be in good hands.

For a team treat – one of our massage therapists will come to your conference room and give your guests a quick lesson on the art of relaxation massage for neck and shoulders – then the fun begins as everyone gets to try their skills on the person sitting next to them. *(Minimum 5 people)*

As our day spa does fill quick quickly, we do advise that you book in advance.



## HOTEL

### The Lodge at Lake House

The Lodge rooms are individually appointed and decorated, and are surrounded with gardens and courtyards. These rooms are clustered around a stylishly comfortable lounge, complete with billiard table & open fire.

### Waterfront Rooms

Our Waterfront rooms provide enchanting views overlooking the foreshore of Lake Daylesford, each with a private balcony, king size bed, ensuite and easy chair. Each room also is also equipped with a television with satellite, DVD player, minibar, and a working desk.



### Waterfront Suites

Our Suites are the ultimate luxurious accommodation. They are spacious and stylish with private balconies or terraces overlooking the Wombat Flat Mineral Spring and the lagoon. Each room is furnished with contemporary interiors, king size bed, lounge area with double fold out sofa bed, easy chair and ottoman. The ensuites include double spa bath, dual shower and heated bathroom floor. Rooms are also equipped with CD, VCR, DVD, satellite TV and internet access, and a walk-in wardrobe for that home away from home feeling.



LAKE HOUSE  
DAYLESFORD

